



PSV-DP2 SYLUR

SHIP'S PARTICULARS

GENERAL

NAME	SYLUR	YEAR OF BUILT	2003
FLAG	CYPRUS	PLACE OF BUILT	SIMEK AS. Flekkefjord, Norway
PORT OF REGISTRY	LIMASSOL	CLASS	PRS
CALL SIGN	5BPZ4	TYPE OF VESSEL	UT755L Platform Supply Vessel
IMO NUMBER	9267039	CLASS OF VESSEL	KM Supply VESS AUT DP2
MMSI	212577000	COMMERCIAL MANAGER	MILIANA SHIPMANAGEMENT LTD.
E-MAIL	sy lur@miliana.eu		
MOBILE	+ 48 502 193 224		
SAT. PHONE	+ 881 677 754 523		

MAIN DIMENSIONS

LOA	71.90 m	GROSS TONNAGE	2150
LBP	66.80 m	NET TONNAGE	997
MOULDED BREADTH	16.00 m	DEADWEIGHT	3292.00 MT
DEPTH	7.00 m	SUMMER FREEBOARD	1.209 m
HEIGHT	27.00 m	MOONPOOL ON CL OF VESSEL	3,8 X 3,555 m
SUMMER DRAFT	5.81 m		

MACHINERY

MAIN ENGINES	Power 2 x 2005 kW Bergen Rolls-Royce	MAXIMUM SPEED	Speed / Consumption 14.6 kts - 23.2 m ³ /day
BOW THRUSTERS	2 x 590 kW	SERVICE SPEED	12.0 kts - 16.2 m ³ /day
STERN THRUSTERS	2 x 515 kW, 60Hz	ECONOMICAL SPEED	10.0 kts - 11.7 m ³ /day
AUX ENGINES	2 x 250 kW, 440 V, 60Hz	DP 24HRS WORK	12 m ³
SHAFT GENERATORS	2 x 1450 kW, 440 V	GEOTECHNICAL SURVEY	12 m ³ /day + 1.2 m ³ /day

CARGO TYPE & CAPACITY

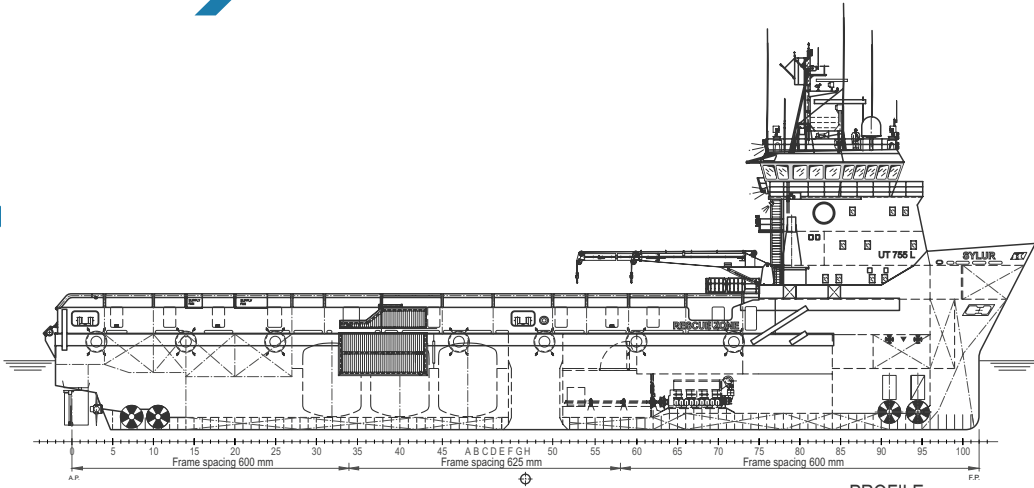
CARGO DECK SPACE	683 m ² (50.56 x 13.50 m)	DECK STRENGTH	5 MT/m ²
DECK CARGO CAPACITY	1599.98 MT	DECK POWER CONNECTION	4 x 380 V
FUEL OIL	Tank's Capacity 901.7 m ³	Transfer Rate	Working Pressure
FRESH WATER	836 m ³	200 m ³ /Hr	9 Bars
DRILL WATER	576 m ³	250 m ³ /Hr	9 Bars
BASE OIL	205 m ³	200 m ³ /Hr	9 Bars
LIQUID MUD	559 m ³	150 m ³ /Hr	9 Bars
MUD DRILLING SYS	49 m ³	100 m ³ /Hr	18 Bars
BRINE	195 m ³	100 m ³ /Hr	18 Bars
DRY BULK	190 m ³	22.5 m ³ /Hr	5.6 Bars

ACCOMMODATIONS

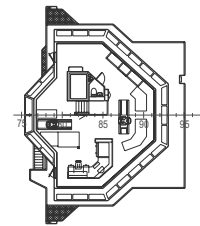
BERTHS:	34	SPECIAL PERSONNEL / PASSENGERS:	42 / 12
CREW MAX.:	12		

NAVIGATION & COMMUNICATION EQUIPMENT

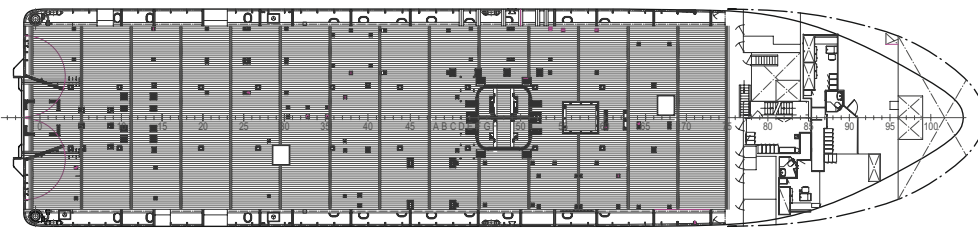
JOYSTICK	Poscon - fore and aft bridge, wandering lead	LOG	1 x Furuno DS-70 doubler
DYNAMIC POSITIONING	Kongsberg SDP 21	AIS	1 x Furuno FA150
FANBEAM	1 x MDL FANBEAM5	DEPTH SOUNDER	1 x Furuno Fe700
DGPS	2 x C-NAVIGATOR III, C-NAV 3050	INMARSAT-C	Furuno FELCOM 18+ECG
TAUT WITE	1 x LTW MK 16 B	INMARSAT-C	Furuno FELCOM 18+ECG + LRIT
MRU	2 x MRU SEATEX	NAVTEX	Furuno NX-700
WIND SENSORS	2 x DEIF - MALLING TYOE 879,3 C	VHF	Furuno FM-8900, SAILOR 6Z22
AUTOPILOT	1 x Anschutz PILOTSTAR D	VHF PORTABLE	3 x ENTEL HT 649
GPS	2 x Furuno GP-80	LIFE SAVING EQUIPMENT	
GYRO	3 x 2 x SPERRY MARINE Mk1, 1 x ANSCHUTZ GYRO-COMPAS STD22	RESCUE BOAT	1 x 6 max x DSB/12B5.1 EGINE 70 BETO YAMAHA
RADAR(S)	1 x Furuno FR-2127 ARPA, 1 x Furuno FR-2137 ARPA		



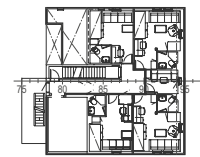
PROFILE



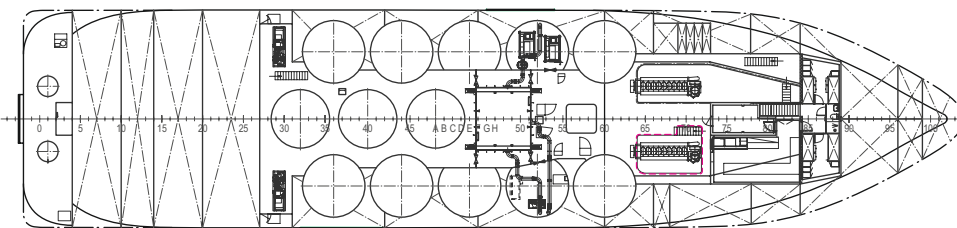
BRIDGE DECK



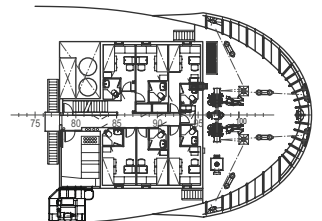
MAIN DECK



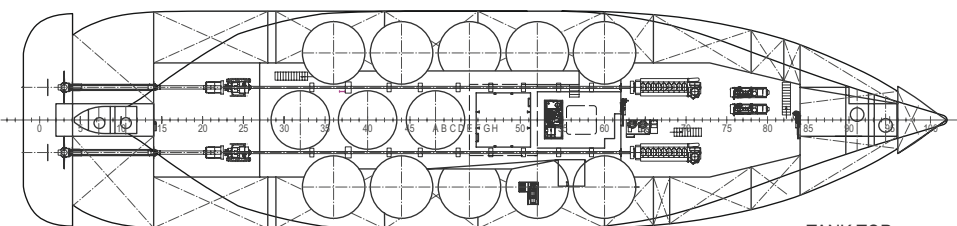
B-DECK



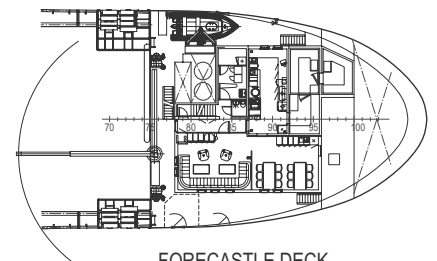
TWEEN DECK



A-DECK



TANK TOP



FORECASTLE DECK

